



The Granite Towers

*A Community Magazine for
Lanlivery and Luxulyan*



December 2023 & January 2024

EDITORIAL



Dear friends,

I hope this edition of the Granite Towers finds you all well; I'm just getting over my first encounter with Covid, and I can say without shadow of a doubt, I do not want to experience it again!

I can hardly believe that we are nearing the end of 2023. It only feels like yesterday we raised a glass to welcome in the New Year. It won't be long before we are going the

same in welcoming in 2024!

Isn't Christmas a magical time of year? We all know the true meaning of Christmas is the celebration of the birth of Jesus Christ but for the little members of our congregations and families it is the time Santa visits; provided we have been good all year! The advertising of the commercialised side of Christmas seems to get earlier and earlier each year. I was in Asda in Bodmin at the end of August where they had one lone artificial tree on display with tinsel. The children hadn't even gone back to school!!

We get 'force-fed' the perfect Christmas tableau in advertising, movies, and television shows at this time of the year. The perfectly decorated tree, the abundance of beautiful garlands and holly decorating vast halls and stairways, always coloured co-ordinated; something I wish I could aspire to each year, the immaculately laid table overflowing with food and of course, the perfectly behaved children. Invariably for many of us it's the same tree (unless you are lucky to be able to have a real tree each year), the same decorations, many of which have special sentimental value and only dreams of being able to achieve anything near to a movie perfect moment. Every year I aspire to the 'perfect' Christmas with beautiful decorations, and the perfectly laid table but in the end, what matters is who we spend Christmas with, not how

much we spend to make it 'perfect'.

The usual serving of Christmas advertisements has started to appear on our screens. I must admit I do enjoy the festive advertisements, but even they are unrealistic. My parents tell me that when a baby I used to sleep through the programmes on television, sit bolt upright when the advertisements came on and then go back to sleep again.... I do however find some advertisements very hard to decipher and understand exactly what it is they are trying to sell me; perhaps if I do not understand the advertisements, it is not designed to sell the product to me!

When younger we would spend our Christmas Day at Chark, with Gran and John, and other family members. I have memories of one Christmas all the 'grown ups' roaring with laughter as they read jokes to each other from a present my brother and I had been given. Another Christmas, my cousin Glynn gave my Gran a talking parrot as a present; it repeated everything she said, and she had a long conversation with it. Then there was the year I decided to regale everyone with the story of the Nativity accompanied by carols I had recently learnt to play on the clarinet. To this day I have no idea how everyone sat through the tedium with a smile on their faces. They were family, so I guess that's what you do! Gosh, just thinking back, I have some wonderful memories of Christmases past, too many to mention here.

However you celebrate Christmas, and whoever you are with this Christmas I hope it's a good one.

Wishing you all a very merry Christmas and a Peaceful and Happy New Year.

Until next time

Claire

The views of the editor are always personal and not necessarily those of the Granite Towers and committee.

FRIENDS OF LUXULYAN VALLEY

Wednesday 6 December - 7.30pm Luxulyan Village Hall
Seagrass beds of St Austell Bay
Speaker - Katie Bellman
Christmas nibbles will also be provided

Wednesday 17 January 2024 - 7.30pm Luxulyan Village Hall
Introduction to Cornish Crosses
Looking into at their distribution, age, design and reasons for being set up.

Tracy Elliott
tracyclimber@hotmail.com

LANLIVERY OVER 60s

The Over 60's Lunch Group meets at 12 noon on the second Thursday in each month, at The Crown Inn in Lanlivery.

In December we are looking forward to what will no doubt be a delicious Christmas lunch with all the trimmings.

If you would like to know more or book a place, please call Mark on 07717 298 884.

Best wishes and Happy Christmas from Mark and Peggy.



VIEW FROM THE SURGERY

Over Christmas and the New Year period people often take the time to reflect on the year as it ends and look forward to the coming year. So, I thought I may reflect on some of the changes in the conditions we have seen as doctors.

The teaching of diseases and their treatments takes some time to change in medical school and textbooks are often said to be out of date when they are published compared to the latest research. There are conditions we were taught that are rarely seen now. Some people reading this may be able to remember relatives or family friends who have suffered from some of the conditions I am thinking of.

I have never seen a case of active Polio. I have however seen people who were disabled as a result of this infection. Smallpox is talked about, but it has been eradicated enough that we don't vaccinate against it. Tetanus is also extremely rare, but I recall seeing a patient who it was thought may have it in the infectious disease ward after they arrived in England from abroad. Luckily Tuberculosis is now quite rare in most of the United Kingdom and the treatment has changed from the months in an isolation hospital often somewhere in the countryside to a course of antibiotics. In day-to-day general practice Measles, German Measles and even Mumps are becoming infrequent conditions. Vaccination and antibiotics are to be credited for a lot of these changes, but better nutrition and public health actions have helped eradicate conditions such as scurvy and rickets.

When I was working in hospital, as all doctors do at the start of their career, I was informed in the 1960s if someone was admitted to hospital with a heart attack, they received an injection for the pain then if they survived, they had a week of bed rest. In the 1990s clot busting drugs were developed to reduce the damage of a heart attack and monitoring of a patient's heart rhythm and infusions of medication to help stabilise the heart. Now people are often taken to the catheter lab and undergo angioplasty to remove the clots and stop any damage being done. This is as well as several medications to take to help the heart for years after.

The overall 10-year survival rate for cancer in the United Kingdom is currently 50% and some cancers have over 90% survival rates. Again, this is due to new treatments and early detection. Technology has a large part to play in this. Scans such as MRIs have become a standard investigation when in the 1980s the scanners were rare.

We do see new diseases and conditions like HIV and AIDS, a new and lethal infection in the 1980s but now patients with HIV have full life expectancy. Even Covid has had its infection rate and mortality rates severely reduced from 2020. There are conditions we haven't managed to successfully treat yet such as Parkinsons, epilepsy, dementia, chronic fatigue syndrome, and Long Covid, to name a few. There is medication to help control their effects but not curing and research is ongoing.

The result of all this is that in the last 50 years the average life expectancy in the United Kingdom has increased from 68.5 years for men and 75 years for women to 79 years and 83 years respectively. In day-to-day general practice it isn't unusual to see patients in their 80s and 90s still enjoying an active life.

So, enjoy the holiday season and if you are making any New Year Resolutions, please add one of trying to live healthier and actively.

Andy Haywood

THANK YOU

We would like to thank everyone who takes the time each edition to contribute content for inclusion in the Granite Towers. Without you and our valued advertisers we would not have a magazine.

We are always happy to hear from you if you wish to share your stories/experiences with the readers. Please email granitetowersluxlan@gmail.com.

We are also keen to receive your pictures of local parish events, recent or otherwise for inclusion on the front or back cover, subject to suitability and quality. Please forward any picture files to ellen.mcconnell@hotmail.co.uk.

ADVERTISING

Please note our advertising costs and new contact details, as shown in the box on page 14

Please send copy for the next edition of "THE GRANITE TOWERS" **FEBRUARY MARCH 2024 EDITION** to the editor, by **JANUARY 10 2024**.
EMAIL ADDRESS for Granite Towers copy:
[**granitetowersluxlan@gmail.com**](mailto:granitetowersluxlan@gmail.com) Photos for front or back page to
 Ellen McConnell [**ellen.mcconnell@hotmail.co.uk**](mailto:ellen.mcconnell@hotmail.co.uk)
See page 10 for all deadline dates.

BOOKING FOR LUXULYAN MEMORIAL INSTITUTE

The Institute is now open, in line with Covid restrictions.

To book the Institute, £10 per session:

Contact Luxulyan Parish Council Clerk by telephone or email: Mrs Christine Wilson, 01208 831283, clerk@luxulyanpc.co.uk

LUXULYAN VILLAGE HALL BOOKING AGENT

Chris Thomas
 tel: 01726 850618
 email: printmasterchris@sky.com



News from Luxulyan School

Out and About

Oak Class (Years 5 and 6) had a great time at White River Cinema meeting author Maz Evans. She told them about her books, answered lots of questions and signed their books. Inspiring stuff!

Year 3 had a lovely time at Crying the Neck. They got to take part in an ancient Cornish harvest tradition in both Cornish and English along with singing some brilliant harvest songs. They also enjoyed some crafts as well as a saffron or yeast bun!

As part of their RE learning this half term, Ash Class went to Luxulyan Church where they learned about Christian infant baptism with Rev. Jules. They have also had a fantastic time visiting the Lost Gardens of Heligan. They went to explore signs of Autumn and to look at their Harvest display.

CELT music bonanza

Luxulyan Choir took part in the first ever CELT music bonanza held at Penrice School on the 8th November. This was made up from choirs across the different schools in CELT. The children from Luxulyan sang 'Cornwall My Home' as their own song and then joined a massed choir to sing 'Fix You' by ColdPlay.

Go Cornish

Having achieved our Go Cornish for Primary Schools Bronze Award in July, we are now starting work on our Silver Award. We have chosen our new Kryw Kernewek (Cornish Team) and they are very excited about their new badges that we have had made for them.



Christmas

Looking ahead to December, we have lots of exciting things planned. Oak (Years 5 and 6) and Sycamore (Years 3 and 4) will be going to Luxulyan Church to take part in 'Countdown to Christmas'. Ash Class will be performing their Nativity Play at the Village Hall. We also have a whole school singalong at the Village Hall and our whole school carol service at Luxulyan Church. We are also taking the whole school to Hall for Cornwall to see Peter Pan. Oh no we aren't! Oh yes we are!

*Compiled by Rachel Allison
Ash Class Teacher, Luxulyan Primary School*

CHRISTMAS QUIZ

1. Which country first started the tradition of putting up a Christmas tree?
2. How many ghosts show up in A Christmas Carol?
3. What Hollywood actor played six different roles in The Polar Express?
4. Which country did eggnog originate?
5. In Home Alone, where are the McCallisters going on holiday when they leave Kevin behind?
6. How many gifts were given in total in 'The Twelve Days of Christmas' song?
7. Where does the royal family traditionally celebrate Christmas?
8. What is the best-selling Christmas song?
9. What country has the most reindeer?
10. What King was crowned on Christmas Day?
11. What year did Mariah Carey's 'All I Want For Christmas Is You' come out?
12. In which country is it tradition to eat KFC for Christmas dinner?
13. How many of Rudolph's fellow reindeers' names start with 'D'?
14. Which city has been donating Trafalgar Square's Christmas tree to London every year since 1947?
15. If you're born on Christmas day, what's your star sign?

Answers on page 6

F. C. BRAY & SONS

For All your Solid Fuel

**Carloggas, Penwithick
St.Austell 01726 850 338**

Emergency 850 642



J. ELLERY

PAINTING & DECORATING

Clean, Friendly and Reliable • Free Estimates

01726 851937 • 07854 340 287

www.jellerypd.co.uk  

Andy's Autos

Servicing and pre-mot
Diagnostics, repairs, new tyres,
all at cheap prices
friendly local service

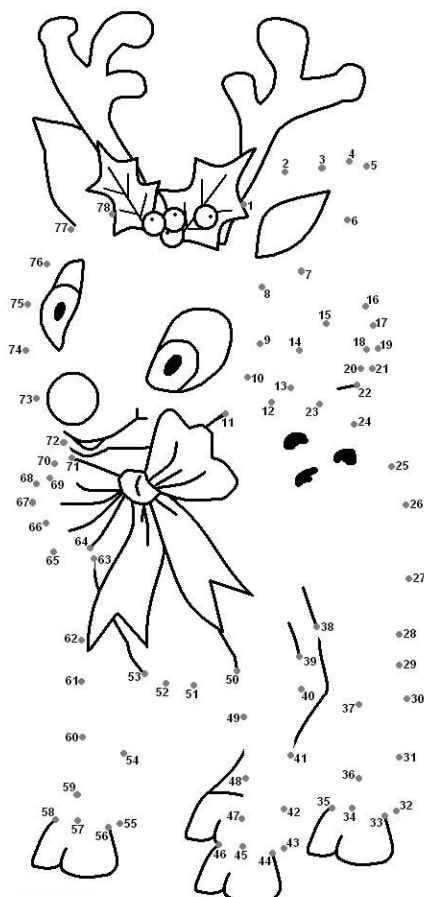
Cyriac Tor Industrial Estate
Luxulyan

01726 851818

07970 883579



DOT-TO-DOT



courtesy of <http://www.merrygames.com>

retallack

Quality Bespoke Kitchens & Bedrooms




**SHOWROOM
NOW OPEN**

-  Quality & Affordability
-  Designed To Suit Your Budget
-  Basic To Bespoke Luxury Kitchens
-  Professional Project Management
-  A Customer Led, Friendly & Local Company

-  Visit Our Show Room
-  Twelvetrees
-  Lostwithiel Cornwall
-  PL22 0LE

 Contact Us

 01208 873283

 07768 168529

 retallackkitchens.co.uk

ANSWERS TO CHRISTMAS QUIZ

(on page 4)

1. Germany
2. Four
3. Tom Hanks as Hero Boy, Father, Conductor, Hobo, Scrooge, Santa Claus
4. Britain
5. Paris
6. 364 gifts
7. Sandringham Estate
8. White Christmas
9. Norway
10. William the Conqueror
11. 1994
12. Japan
13. Three - Dasher, Dancer and Donner
14. Oslo
15. Capricorn



Mondays **LISKEARD**

St Martins Church Centre
5.30pm or 7pm
Tel: Elaine 07818094119

Tuesdays **LISKEARD**

St Martins Church Centre
9.30am or 11am
Tel: Elaine 07818094119

Wednesdays

ST BLAZEY

Alexander Hall
7.30am, 9am, 10.30am,
4pm, 5.30pm or 7pm
Tel: Elaine 07818094119

slimmingworld.co.uk

#YesYouCanWithSlimmingWorld



Slimming
WORLD

touching hearts, changing lives

SALLY KINGTON

PGDip MCFHP MAFHP

FOOT HEALTH

PRACTITIONER

Toe nail cutting

Reduction of thickened nails

Removal of corns and callus

Ingrowing toe nails

General foot care advice

For a home visit please telephone

07768 613894

Email: sal-stafford@hotmail.co.uk

HIGHWAY GARAGE

TYWARDREATH HIGHWAY, ST BLAZEY, PAR
CORNWALL, PL24 2RN

Telephone: 01726 812781 & 815508

After hours: 01726 812781

www.highwaygarage-par.com

BODYWORK SPECIALIST

**CAR & LIGHT COMMERCIAL
REPAIRS & SERVICING**



**WHEEL ALIGNMENT
VEHICLE RECOVERY**

**Stay alert, stay safe, please
observe social distancing**

LANLIVERY COMMUNITY PLAY EQUIPMENT FUNDRAISER

With the backing of the Parish Council, we aim to acquire new play equipment for the village playing field. The current equipment has reached its lifespan, and your support would help us establish a vital play park for local children, including toddlers.

While the Parish Council supports our application, they are unable to fully finance the new play equipment. Our goal is to create a safe area for all ages, catering to various abilities and with your support, we can make this a reality.

We must finalise our funding applications and initiate the installation of new equipment by the end of 2023. Additional funding will be sought to potentially expand the play equipment in the future. However, it is crucial that we commence the initial phase of updates promptly to preserve the secured funding.

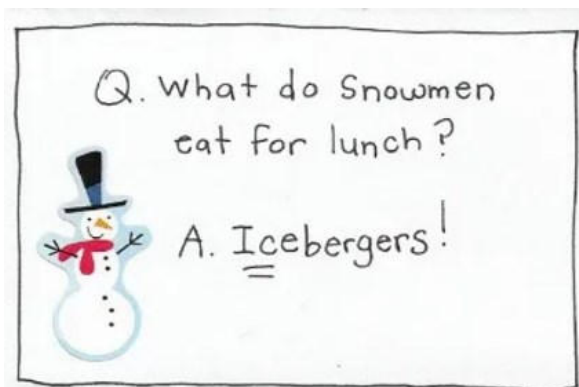
Every penny raised through this crowdfunding campaign will be dedicated to enhancing the play equipment and play area in the village green.

Thank you for taking the time to read our story and for supporting our cause in any way you can. Your contribution will make a significant difference to the development and well-being of our community's children. Together, we can create an inclusive and modern play area for generations to come.

Let's work together to give our children a safe and enjoyable place to play and grow in our village. We appreciate your support, whether it be through donations or spreading the word about our fundraiser.

If you are able to help us please contact Emma@whbond.co.uk.

Talyn Truscott



SINGERS WANTED

For the St Austell Choral Society

- Sacred and secular music • vacancies for all voices
- No audition required
- Rehearsals on Friday evenings

Full details at



www.staustellchoralsociety.co.uk

www.facebook.com/staustellchoralsociety/

GET IN TOUCH - NOW!!



INDOORS

- The Treffry Library of Local History & our online Story Shop

OUTDOORS

- History walks in Luxulyan Valley
 - Working models of Green Building, Energy and a House of Green Play
- JOIN US!**

- Phone 07967 653346 or connect via the web page at

www.themeadowbarns.co.uk

THE RED MOOR SCHOOL



**Red Moor
School**

Once again, we have had a very busy and enjoyable start to our school year, with many positives to celebrate. Everyone at Red Moor, and in the local area, worked exceptionally hard under the guidance of our vocational instructor, Andy Stevenson, to create 162 poppies from scallop shells for a beautiful installation at the local church.

Our pupils also created figures of soldiers and remembrance wreaths, all decorated with poppies, to help everyone remember and say thank you to all servicemen and women. Pupils and colleagues paraded to the churchyard, led by their new Army Cadet Unit. The pupils who choose to be part of the Cadet Unit in their enrichment, run by two of our TAs, practiced wonderfully for the parade and were able to wear some of their uniform for the first time. One of our students had the honour of carrying the standard, and another, came in their full parade uniform, carrying their standard alongside one of our teachers, and our family support worker, who both give their free time to helping run sea cadets.



At Red Moor School we made the most of the planned electricity disruption to allow for tree maintenance to take place one Friday by having a whole school, Lights Out; the Big Trip Day! All students and most staff left site for the day, exploring local businesses and areas: Some students went ice skating at the Eden Project, another group visited the National Marine Aquarium, and another group explored Mevagissey before visiting a suitably spooky and historical Bodmin Jail. Thank you to all the local businesses that accommodated our students and made what could have been a very disrupted day, a lot more enjoyable! The staff remaining on site went back to basics with hot drinks made by Andy in our outdoor vocational area.



We are continuing to develop our site and improve what we can offer our students. Thanks to a generous contribution from our company's green initiative, we have been able to purchase new equipment and safety measures for the area, and thanks to a lot of dedication from our staff and students, the Himalayan Balsam has been removed from the lake area of our site. It has been lovely to see the site change and be brought back to use, with the help of Cornwall Countryside Management. It is now a more functional area that we can continue to work on before including it in our outdoor education provision. We have also begun to develop our own Forest School type provision called Giraffe Plains at Red Moor. This gives our students the opportunity to build relationships with staff and learn through outdoor play and nature experiences. We look forward to seeing this progress more over the next year as it is an opportunity that is invaluable for some of our students.

We are now looking forward to Christmas and all the festivities that we get to enjoy! Students in their drama club have been working hard on planning their very different Christmas Performance this year and preparations are in full swing for the Christmas Fayre, where we will invite last year's year 11s back to school to celebrate their GCSE achievements!

The Team at Red Moor School



IN MEMORY

In memory of Stephanie Pedrick who died at home 19/10/23.

Chris and Jim would like to thank everyone for their prayers.

All the friends and neighbours who have helped us through this.

To name a few John, Rosemary, Matthew & Talyn Truscott, Diane and Doug Williams and Carrie Garry and especially my dear granddaughter Jessica who has been here with us throughout.

Thank you everyone.

Christine Pedrick.



DATE REQUESTED

I have been given a photograph from the collection of the late Mrs Diane Oliver and need help to understand it.

It shows the Air Ambulance – not the current one – on the school playground with four people who appear to be carrying someone on a stretcher into the helicopter.

No children around, it was wintertime, so was it a real emergency and can anyone date the photograph for me please?

Hazel Harradence.

MEMORIAL INSTITUTE COFFEE MORNINGS

Please come along and enjoy a cup of tea or coffee and bacon butty or cake and some company. The Institute will be open from 10am on Saturday 2nd December then on Saturday 6th January.

LUXULYAN CHARITY COFFEE MORNINGS

At the King's Arms, Luxulyan, on the last Thursday in each month there is a Charity Coffee Morning kindly hosted by Sam and Wayne. The money raised goes towards various projects around village; most recently it has given money to the Youth Football Club to help towards their medals and trophies for the end of the season, £200 to the school library and a contribution to the costs of a young lady who has represented Great Britain as a junior archer. Coffee/tea, a piece of cake and a raffle ticket each cost £1. If you can bring along a small raffle prize as well, that will be gratefully received. We will not be meeting at the end of December, but after that it will be 25th January and 29th February. Look forward to seeing you.

LUXULYAN OVER FIFTIES

Luxulyan Over 50s is a club that meets on first and third Wednesdays every month for a modestly priced lunch and friendship at the King's Arms, Luxulyan at **12noon**.

Members are phoned a few days in advance to select from a choice of two, their main and sweet courses so that delays are kept to a minimum.

Subs are £2 per year and a raffle is held at each meeting which helps with the cost of the Christmas meal.

New members are welcome, so please telephone Val on 01726 850045 for details.

AA CLEANING

- Domestic houses
- Holiday properties
- Spring cleans

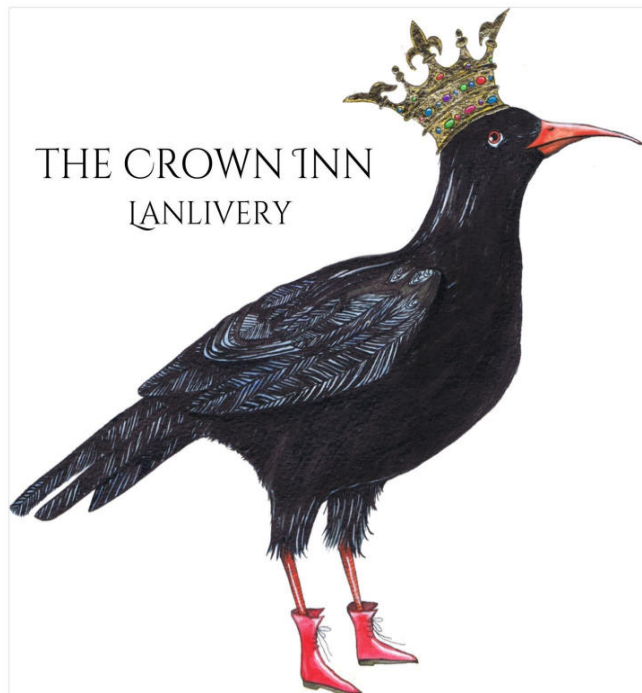
FREE QUOTES



MOB157777

Call to discuss your requirements

01208 831496 • 07971 263826



tel 01208 872707
www.thecrownlanlivery.co.uk
 Lanlivery, Cornwall
 PL30 5BT

A GUIDE TO THE DEADLINE DATES FOR COPY FOR THIS MAGAZINE

Deadline dates are generally the **10th of the month preceding publication of the edition.**

Editions are April/May; June/July; August/September; October/November; December/January; February/March;

THUS:

May 10 for JUNE/JULY edition

July 10 for AUG/SEPT edition

Sept 10 for OCT/NOV edition

Nov 10 for DEC /JAN edition

Jan 10 for FEB/MAR edition

Mar 10 for APRIL/MAY edition

NOTE THAT IF YOUR SUBMISSION IS LATE, WE MAY NOT BE ABLE TO INCLUDE IT.

WHILST WE DO PRE-ALLOCATE SPACE FOR REGULAR CONTRIBUTORS, PLEASE USE IT OR YOU MAY LOSE IT!

* * * * *



Lanlivery Church
 Tuesday 12th
 December 2023
 7.30pm

A Christmas Celebration
 with
 Restormel Concert Band
 and
 Acappella Sound
Ladies Chorus

Tickets on the door
 £7.00 to include
 refreshments




Roseland Podiatry

Visiting podiatry/chiropractic practice

07813 508740 / 01872 530715

Treatment of nails including conditions such as ingrowing, thickened and fungal nails.

Treatment of corns, callus and other skin conditions.

Diabetic and high risk foot management.

Biomechanical assessments and orthotics.

Footcare and footwear advice.

Julie Moutinho DPodM MCPod

Registered Podiatrist

juliemoutinho123@gmail.com

hcpc
 registered
www.hcpc-uk.org

W. Richards & Son

THE FEED STORE, SWEETSHOUSE, Nr BODMIN,
CORNWALL PL30 5AW

Large Range Of Animal & Pet Foods

Full Range Of Horse Feeds & Supplements

Pre – Packed Coal, Gas, Logs, Kindling

Easy Parking, Cash n' Carry Prices

Telephone 01208 873288

ESTABLISHED OVER 80 YEARS

LADIES' KEEP FIT LUXULYAN

Ladies up to 80+ meet in the village hall on Mondays 6:00pm - 7:00pm. We run 3 terms of 12 weeks led by our expert personal trainer/fitness instructor Emma Youlden. Our activities are strenuous but adapted to the individual needs of all members, with a range of capabilities.

The fees are £40 per term or £5 for single sessions.

If you are interested in joining the class, have a chat with Wendy Lewis, tel. 07852 112539

Wendy Lewis



**Nikki's
Childcare**

Registered Childminder



Spaces available 0-8yrs

Funded sessions available for 2-4yr olds

- OFSTED graded as outstanding
- Luxulyan based
- Over 16 years experience
- Fully covered & insured
- Clean driving license

- Outdoor learning
- Messy play
- Trips out
- Excellent care
- EYFS covered
- Spaces limited

Call Nikki
**01726
858700
or
07850
161359**

THE GRANITE TOWERS COMMITTEE

Arlene Burley,

Robin Burley
(Co-editor, Compiler)

Jim Cleare,
(Advertising),

Jan Dunk,

Ellen McConnell
(Treasurer, Secretary),

Claire Newson
(Co-editor),

Verna Roberts,

Jackie Soady,

Rosemary Truscott
(Distribution).

Electrical
Contractor

JASON FULLER

tel. 01726 817889

mob. 07828168392



jasonfuller.padstow@googlemail.com

M.A.GRIGG COUNTRY STORE

Come and visit us instore to see our new extended clothing department with a wide range of products! Not got time to pop in? Why not shop online! Open 7 days a week, including bank holidays!

WWW.MAGRIGG.CO.UK

FOR COUNTRY, LIFESTYLE & FOOTWEAR

Barbour
125 YEARS

White Stuff

HUNTER

joules

THE NORTH FACE

WWW.GRIGGSEQUESTRIAN.CO.UK

FOR ALL YOUR EQUESTRIAN NEEDS

ARIAT

WEATHERBEETA

DUBLIN

LeMieux

NAF
★★★★★

G
Grigg's
RESTAURANT

Offering a large dining area and cosy sofa's for a relaxed feel as well as the option to dine al fresco on our balcony while you enjoy some stunning rural views of the surrounding farmland.

Pendennis, Lower Sticker, St. Austell, PL26 7JH

01726 65656



online@magrigg.co.uk

THE VILLAGE SHOP

AND

POST OFFICE

LUXULYAN

MONDAY to SATURDAY 7.30am till 6.30pm

SUNDAY 9am till 4pm

When the shop is open, the **Post Office** is open

Fresh Fruit & Vegetables

Fresh Local Meat

Sandwiches & Snacks

Cards & Stationery

Household & Pet Supplies

Coal, Logs & Kindling

Tobacco & VAPE

Newspapers & Magazines

Lottery

Full Off Licence

**Home Delivery Available or
Pre-order your Shopping to Collect**

Telephone 01726 850 610

[f/thevillageshopluxulyan](https://www.facebook.com/thevillageshopluxulyan)
luxulyanvillageshop@gmail.com



**Mid Cornwall
Photographic
Club**

We have moved to Lostwithiel

Join us in The Platform Room on the first and third Thursday of each Month from September, 2019
Starting at 7pm

To find out more contact us on
midcornwallphotoclub@gmail.com

Colwith Farm DISTILLERY

Come and visit Cornwall's first
'plough to bottle' Gin & Vodka Distillery



We offer:

Distillery Tours | Tutored Tastings | Gin Schools
Gin Masterclasses | Shop with free samples

Find us near Lostwithiel, Cornwall

**£5 off in the Distillery Shop when you spend
over £30 - Quote GraniteTowers5**

Crewell Moor, Pelyn Cross, Lanlivery, Cornwall. PL22 0JG
www.colwithfarmdistillery.co.uk | 01208 873967

ROBERT LEWIS Gents Hair Stylist

85a Par Green

Tel: 01726 815008

Hours of business

Monday / Tuesday	9.00am – 1.00pm 2.15pm – 5.30pm
Wednesday	Closed
Thursday / Friday	9.00am – 1.00pm 2.15pm – 5.30pm
Saturday	9.00am – 1.00pm

JUSTIN WILLIAMS WINDOWS



"Laurel Brook", Edgumbe Road, Lostwithiel, Cornwall, PL22 0DR

Tel: 01208 623740 or Mobile: 07578 424420

Email: info@justinwilliamswindows.co.uk

For the supply and fitting, or supply only to the trade and DIY

PVCu & aluminium windows, doors, bi-folding or patio doors,
conservatories, double glazed units, servicing and repairs
Or supply of PVC fascias and rainwater goods

Contact Justin or Tracey for a free quote



Fancy a new hobby? Maybe try a new sport?

*Perhaps you just want
to meet new people in
your community, or
you want some gentle
exercise.*

*Whatever your reason, have you tried
short mat bowls? If not, why not?*

*Did you know your local club practices at
Luxulyan Village Hall on Wednesdays and
Fridays.*

*If you want to know
more or times of
sessions, call
Luxulyan SMBC on
07779 473544 or
visit our website*



Short Mat Bowls

Give it a Try

www.luxulyansmbc.com or look for us on Facebook!

Covering the whole of Cornwall ...Why Struggle?



In addition to the above, we sell a
comprehensive range of items to assist
with the everyday tasks that prove more
challenging as time slips by.



A **Home Service** is available to those
unable to visit our shop.

For information please call:

01208 75355

No pressure sales guaranteed!!!

MobilityCentre

SOUTHWEST LIMITED

4 Crockwell Street · Bodmin · PL31 2DS

www.mobilitycentersouthwest.com

LANLIVERY FROM THE ARCHIVES

Cornish Guardian – Thursday 24th December 1959

LANLIVERY Parents and friends gathered at Lanlivery C.P. School on Friday afternoon for the school's first carol service, in which all the children took part, singing carols of many lands. The adults joined in the more familiar hymn carols. The accompanist was Mrs. Fenton and Mrs. Seeker conducted the service.

Cornish Guardian – Thursday 28th December 1961

Lanlivery Primary School Party The pupils of Lanlivery School gaily decorated their classrooms for their Christmas party at the end of term. After a traditional dinner of roast pork and Christmas pudding an exciting programme of games and dancing followed. A high tea provided by the parents was greatly enjoyed by the children, who were waited on by their teachers. Mrs. J. Seeker and Mrs. A. Fenton, assisted by old boys of the school. Carols were sung until the arrival of Father Christmas, who gave each child a gift from his sack.

Cornish Guardian – 26th December 1963

WOMEN'S INSTITUTES Luxulyan and Lanlivery. Mr. Littleton gave an informative talk on "Old Cornwall" during which members learned some of the history of their own locality. The talk was illustrated with coloured slides shown by Mr. Toogood. Mr. Littleton was thanked by Mrs. Secker. The competition, a fruit flan in a pastry case, was Judged by Mrs. Littleton and winners were Mrs. Higgs and Mrs. E. Blake. Mrs. E. Blake and Mrs. Higgs were also the hostesses.

Cornish Guardian – 2nd January 1969

SCHOOL EVENTS AT LANLIVERY Last week, children of Lanlivery C.P. School were joined by parents and friends in singing the annual carol service in the parish church. The evening programme was arranged by the Rev. H. B. York, priest-in-charge at Lanlivery and Luxulyan, Mrs. Secker and Mrs. Pratt. Christmas readings were from the New Testament, and during the service some of the children placed figures of Biblical characters on the Crib.

On Wednesday the school's annual party, organised by Mrs. Secker and Mrs. Pratt was held. Among the invited guests were Mrs M Fenton, a teacher who recently retired, and Mrs. S. D. Evans, one of the school managers and her husband. All the food for tea was supplied by the children's parents. After tea, Mr. Evans told the children a Christmas story which he had specially written for them, and the final episode was the giving of a present to each child. The head boy, Keith May, presented Mrs. Evans with a waste-paper basket which he had made himself.

Newquay Express and Cornwall County chronicle – Thursday 30th January 1947

WEDDINGS Ead Littleton Lanlivery The marriage was solemnised at the Parish Church Lanlivery on Saturday of Mr Francis Owen Ead elder son of Mr and Mrs B Ead of the Post Office Cardin-ham and Miss Maisie Littleton younger daughter of Mr and Mrs T W Littleton, Streigh Farm, Lan-liverv The service was choral, the hymns sung were, "The voice that breathed o'er Eden" and "Love divine," and Mrs J Dunn was the organist. The vicar Rev W E Wynne officiated

Given marriage by her father the bride wore an ankle-length gown of white corded silk with bridal veil fastened with a coronet of orange blossom and silver shoes. She carried a bouquet of red carnations, tulips and white heather and was attended by two bridesmaids Miss Mary Littleton sister of the bride and Miss Vida Ead, sister of the bridegroom. Their dresses were of powder blue nylon with feather head-dresses and shoes to match. They carried bouquets of cream chrysanthemums and white heather. Little Ann Ead sister of the bridegroom was flower girl. Her dress was of white nylon and she carried a posy of violets. The duties of best man were carried out by Mr Raymond Ead brother of the bridegroom The ushers were Messrs Gordon and Peter Littleton cousins of the bride.

Customary gifts were exchanged between the bride and bridegroom. The bridegroom's presents to the bridesmaids were silver bracelets. Peals were rung on the bells. A reception was held at Streigh Farm.

Compiled by Claire Newson



ADVERTISING

Please contact Jim Cleare
on 01726 850553

[jim.cleare@](mailto:jim.cleare@btinternet.com)
[btinternet.com](mailto:jim.cleare@btinternet.com)

*Ideally, 1/4 page
submissions should fit into
a four to the page format
13.5 cm height x 9.5 cm
width. Note we do not
construct adverts; they
should be supplied in
finished form.*

**PLEASE NOTE OUR
PRICES AS FOLLOWS FOR
SIX ISSUES PER YEAR:**

Large adverts—1/4 of a
page—£45
Small adverts—1/8 of a
page—£25

“For Home and Country”

WI REPORT

Members enjoyed a very convivial evening at their meeting in October, it being the annual Harvest Supper, held in Luxulyan Village Hall. A pasty supper, with delectable desserts made by members ensured a festive evening. The competition for best Harvest Basket was won by Lorna Curtis and the contents were divided up and raffled.

A warm welcome by president Verna Roberts and the singing of “Jerusalem” began November’s meeting in Luxulyan Village Hall. There was a special welcome for the speaker for the evening, Jane Richardson whose subject was Medical Detection Dogs.

She gave a very informative and fascinating power point talk on how these dogs are trained to literally sniff out cancer in humans at an early stage so that treatment can begin before the disease develops too far. Lorna Curtis thanked her warmly, and then everyone enjoyed the delicious refreshments made by Joan Lawson and Val Hodge, while browsing the Bring and Buy stall run by Joan Blackshire.

Before the business meeting, Hilary Johns was wished Happy Birthday and presented with a flower posy made by Lorna Curtis.

The minutes of the October meeting were made available to be read and signed. It was noted that members were happy

with the new format of the Harvest meeting, involving a raffle rather than an auction.

Secretary Anne Parr reported that the NFWI 2024 National AGM would be in the Royal Albert Hall, London on Wednesday 4th June and the 2024 Resolution Shortlist was available on myWI from 2 November 2023. Voting slips can be returned from each WI by post after the January meeting (or before) or by email, or by individual member email.

Members were delighted that Amanda Penk was featured in the November issue of the WI County News as the new Associated Country Women of the World (ACWW) Representative.

Amongst the varied activities and events available to members were Bird Watching, a Retro Lunch (re-living the ‘70s) – a County Lunch and an International Women’s Day tea. Details of the 2024 Royal Cornwall show, to be held from 6th – 8th June 2024 on the theme of Sea Fever, were received. Lorna is coordinating our entry. She reported that everything is also in hand for the craft work for the Winter Show in Wadebridge. A morning walk from St Winnow to Lerryn was planned for Thursday November 9th. It was decided to check December’s walking dates with Amanda after the meeting, as she was absent.

Christmas plans were next on the agenda. Members were reminded about the Christmas Lunch at Carlyon Bay Golf Club on December 6th and the WI Carol Service, to be held in St. Petroc’s Church, Bodmin. December 13th is the date for the members’ Christmas party: everyone was asked to bring a plate of food and a Christmas card. There will be a raffle, games and presents.

Verna then described a recent event “An Afternoon of Cornish Entertainment” held at Chy Noweth, the WI’s headquarters in Truro, which she attended with Jackie Soady and Sue Hillier. The two well-known Cornish bards, Bert Biscoe and Pol Hodge, gave lively readings of their poems, with Bert singing several of them to the accompaniment of his guitar. It was all very Cornish and truly entertaining.

Anne reminded the committee that their meetings would start at 1.45pm in January.

When the raffle was drawn it was Hazel Harradence who drew the winning ticket. Joan Lawson won the competition, a picture of a pet, and Lorna Curtis was second. Lorna also won the Flower of the Month competition.

The next meeting will be held in Luxulyan Village Hall at 7pm on Wednesday December 13th, when it will be the Christmas party. January’s meeting will be on January 10th 2024 at 7pm in Luxulyan Village Hall. The speaker will be Jennifer Blockley, who will talk about patchwork wall hangings by children and the competition will be a child ornament.

The meeting closed with the National Anthem.

New members and visitors are always very warmly welcome to meetings, so please ring Anne Parr on 01208 871082 or Verna Roberts on 01726 812065 for further information. We would love to hear from you.

Verna Roberts

GLEAM
WINDOW CLEANING SERVICES

EXTERNAL & INTERNAL WINDOW CLEANING

FASCIA, SOFFIT, GUTTER CLEANING

RENDER CLEANING

PRESSURE WASHING

ROOF CLEANING

GUTTER INSPECTION & CLEARING

WATER-FED POLE HIGH REACH SYSTEM

FULLY INSURED  **FREE QUOTATION**
COMPETITIVE PRICES  **COMMERCIAL**  **DOMESTIC**

SIMON: 07816 666 086 | LANDLINE: 01726 61176

GLEAM WINDOW CLEANING SERVICES | 2 POLYCAR CLOSE | POLGOOTH | ST AUSTELL | CORNWALL | PL26 7BH

WISH UPON A STAR

When you wish upon a star, makes no difference who you are, when you wish upon a star your dreams come true.

December 1975

Angela lay in the maternity ward, exhausted after her long labour, gazing at the little being in the transparent cot beside the bed. With her husband Pete having left to announce the birth of their daughter to the world, she was alone to stare in awe at the miracle they had created.

Shifting her gaze to the window, she saw a host of stars twinkling in the night sky. One was brighter than the others, outshining their starlight like a laser beam in competition with a torch. *Wish upon a star.* Angela had lost count of the number of times she'd made wishes that didn't come true. As a child, and even now, Pinocchio was her favourite Disney film, mainly because of the promise that song held. She'd never wished for much for herself, nothing impractical or unattainable, but somehow whatever she'd wished for was supplanted by something more important. She'd wanted to go to university, but had foregone her chance in favour of her brother because their parents couldn't afford for both of them to go. She'd wanted to be a teacher but, not wanting to put her hard-working parents under pressure, she'd taken a job in the local council offices, where she'd earned a modest wage, a third of which she'd given to her parents.

Every Christmas Eve, which was also her birthday, her mother put the star on top of the tree and told her to make a wish. It was bound to come true because people born at Christmas were special, her mother said, and because stars were really angels looking down on earth. For years Angela believed this until, when wish after wish wasn't granted, she came to believe the reality – that hard work and determination got you what you wanted more than wishing, whether on a star, an angel or anything else.

Tonight though, Angela couldn't help herself. She made the most fervent wish of her life – that her daughter would be happy and healthy, that she and Pete would be able to give her all the things she wanted, things she hadn't had when she was growing up or attained in adulthood.

It was two a.m. when the angel appeared. He hovered above the bed, wings unfurled and white-robed, with an enigmatic smile on his face, so like the way she'd always imagined angels would look that he could have stepped out of a Christmas card. 'Hail Angela,' he said, pronouncing her name Angel—a in his golden voice. 'You have brought forth a child and shall be much rewarded. What is your greatest wish?'

Stunned, Angela stared at the apparition. 'That my baby will be happy and healthy and have all the things I never had,' she stammered, unable to believe she was talking to an angel.

'That is more than one wish,' the angel replied solemnly. 'What do you lack? Do you have love, security, support from those who love you? Are you free from hunger and pain?'

'Y-yes,' she admitted.

'And do you love those who love you, support their needs in every way?'

That took a little longer to answer. 'Yes,' she said at last.

'And will you love and support your child in the same way?'

'Of course I will!' she replied fiercely.

'Then you lack nothing and neither will your child...'

'Angela. Angela, time for baby's feed.' The brisk voice filtered into her consciousness. Blinking the sleep from her eyes Angela looked at the kindly face of the nurse, momentarily unaware of where she was. A tiny cry filled her ears as the baby was laid in her arms. The nurse retreated, and Angela held her daughter to her breast. As the baby suckled contentedly, Angela's gaze went to the window. The bright star had shifted slightly but was still there, dazzling in the inky sky. *Wish upon a star.* For few seconds Angela could see the face of the angel smiling at her from within the star. She blinked and it was gone.

December 1980

'Mummy, can I put the star on top of the Christmas tree?'

Five-year-old Mary looked up at Angela earnestly, her face aglow with anticipation.

'All right, but we'll wait till Daddy comes home then you can sit on his shoulders so you can reach.'

Content with this promise Mary asked, 'We've got an angel on the tree at school. Why do we put a star on our tree, Mummy?'

Angela thought carefully before answering. 'Well,' she said, putting her arms around her daughter, 'you know how the wise men followed the star to get to baby Jesus, don't you? So a star on the tree reminds us of that.'

'But an angel's prettier,' Mary said.

'A star is pretty too when it shines,' Angela said. 'It lights up the sky and anyway-'

Angela hesitated. Making up her mind she went on, 'Anyway, a star is really an angel looking down on earth. So it doesn't matter which we put on the tree because they're both there all the time.'

Mary seemed to like this idea. 'Can I make a wish Mummy, like in the song? You make a wish too.'

Angela closed her eyes and pretended to make a wish, though she knew she didn't need to. Her wish had come true the night Mary was born.

Christine McHaines



BOOK GROUP

Do you enjoy reading and discussing books? If so, why not come and join us at Lanlivery Book Club. We read a wide selection of books and have a lively chat with refreshments.

Please contact Kay on 01566 248159 for details of the next meeting.

Kay Roberts

A&A Garden-Landscape & Property Maintenance (Luxulyan)

From:

Grass cutting to complete
Landscaped gardens:

Tree surgery:

All aspects of property
maintenance:

Interior/exterior painting, block
paving-slabs-aggregates-decking, fencing,
fibreglass roofing, block work, etc.

For a free quote

Ring
07846407802

Have you seen our new publication?

THE **Cornish** LOCAL

*We promote local and independent
businesses that:*

Care for you and help you to care for your property,
your home, your garden, your pets and even your car.

**Find out more about
advertising your business**

In the next edition of one or both of our titles

**Bodmin & Wadebridge
and St Austell**

Each with a circulation of over 30,000 per issue
Produced every quarter by Phoenix Print Bodmin
and delivered by Royal Mail.

07481 903271

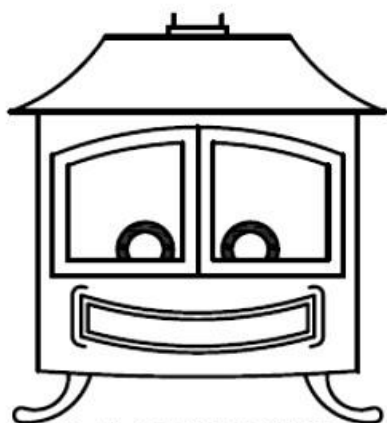
info@thecornishlocal.co.uk

www.thecornishlocal.co.uk

STU'S STOVES

WOODBURNING STOVES - MULTIFUEL STOVES - PELLET STOVES
DRY & WET FIT - INTERNAL & EXTERNAL METAL CHIMNEY SYSTEMS
FLEXIBLE FLUE LINERS - FIREPLACES - SERVICE & MAINTENANCE

Stay cosy!



Call 07811 693246
email: stuarthalls@yahoo.com

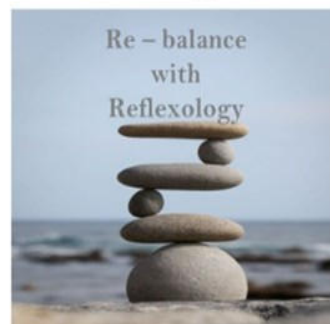
TREATMENTS AVAILABLE FOR ADULTS & CHILDREN



Rebecca Williams

CLINICAL REFLEXOLOGIST

www.clinicalreflexologycornwall.co.uk



Rebecca Williams BA(Hons) CRM Level 5 Dip.MAR
Clinical Reflexologist + Massage Therapist

Call or Email for a free consultation

Tel 07867 522291

Email rebecca@clinicalreflexologycornwall.co.uk.

The Studio - Wood Mill Farm

Prideaux Road

St Blazey

Par

PL24 2SR



Pelyn Veterinary Group



**The Surgery
No Mans Land
Lostwithiel
Tel: 01208 872254**

**The Veterinary Centre
8 Kings Avenue,
St. Austell
Tel. 01726 68177**

JOHN TRUSCOTT

**FENCING & HEDGING
STONE BUILDING
SHED BUILDING**

**TEL:
01208 872144**



Keith Parkyn

**Local Painter & Decorator &
Property Maintenance**

**Interior & Exterior work carried out
Free Estimates
For Friendly service and advice call:**

**Tel: 01208 841828
Mob: 07747 399503**

**Laburnham,
Wadebridge Road,
St Mabyn, PL30 3BQ**



All Work Guaranteed 12 Months - Over 20 Years Experience



- ✓ Digital TV Aerials & Additional Points
- ✓ Freesat Systems Supplied & Installed
- ✓ Sky/Sky+ System Repairs
- ✓ European Language Satellite Systems
- ✓ TV/DVD/Freeview & Video Set Up
- ✓ View Sky/Freeview In Any Other Room
- ✓ Extra Phone Points

freesat

Freesat, the service from the BBC and ITV
Over 140 digital TV and radio channels
HD TV programmes subscription-free
No contract, no subscription, just one payment

Tel: 01726 883655 Mob: 07841 198548

sky www.shaneperry.tv
email: shane@shaneperry.tv

Freeview



**Nick Jago and David Michael
Family Funeral Directors**

Wedlake Funeral Home

01726 850216

Serving you and your family since 1921

Cremations - Burials - Direct Cremations

Pre Payment Plans - Home Visits

wedlakefuneralhome.co.uk

S.W. Removals & Storage

PAR, CORNWALL



- Quality removals & house clearances
- Local, U.K. & France specialists
- Great value storage/self storage
- 30 yrs. in the trade, serving Cornwall
- Free quotes

www.swremovalsandstorage.co.uk
email: info@swremovalsandstorage.co.uk

Unit 4, Roundhouse Ind. Estate, Harbour Rd. Par, Cornwall PL24 2BB

Tel. 01726 815053 / Mob. 07974 180041

LUXULYAN 100 YEARS AGO

Transcribed from original texts in the Western Morning News and Cornish Guardian.

WMN. 7 December 1923: At Luxulyan the village blacksmith played for safety, exhibiting the posters of both candidates. (election campaign)

WMN. 31 January 1924: Drawing of an old Cornish cross which was recently discovered at Luxulyan by Mr CG Henderson. My attention was attracted by a gatepost near Trevillen (*sic*) farmhouse in Luxulyan, the property of Mr E White. On Friday last with his readily accorded permission, I dug round the base of the stone and discovered a distinct tenon for fitting into a base, showing that the stone is a cross-shaft without doubt. - - -

CG. 11 January 1924: A very pretty wedding took place at the Luxulyan Parish Church on 27th inst, the contracting parties being Gwendoline Mabel, the only daughter of Mr & Mrs JH Darlington of Atwell, Luxulyan and Henry Charles eldest son of Mr & Mrs W Bicknell of Newquay. The bride given away by her father wore a grey (*gold?*) gabardine dress trimmed with grey (*gold?*) satin and silver beads, with a gold velvet hat to match and she carried a bouquet of chrysanthemums and maidenhair fern which was subsequently placed on the war memorial. The Misses Ella and Kathleen (sister of the bridegroom) were bridesmaids and wore dresses of gold crepe-de-chene with brown satin hats and gold brooches, the gift of the bridegroom and they carried sheafs of chrysanthemums. Mr Keith Bicknell (brother of the bridegroom) acted as best man.

CG. 11 January 1924: A good Record of Longevity. Out of a population of just over 1,000 there are living at the present time in the parish one person aged 101 years, 12 persons between 80 and 90, and 18 between 70 and 80 years of age, whose united ages will average 76 years. Several of these are fairly active. There are about 12 persons close on 70 and several of the recent deaths have been over 70.

We have tables of length of lives as affected by various callings and industries, there is also the matter of soil and climate, but from whatever cause the parish of Luxulyan gives a good record of length of life of its inhabitants.

Compiled by Hazel Harradence



COUNTRY FLOWERS

www.country-flowers.uk

BOUQUETS, FLOWERS BY POST, WEDDINGS, FUNERALS, CUT FLOWERS

HOLLY WREATHS, CHRISTMAS ARRANGEMENTS

Find us on Facebook

LOCAL DELIVERIES AVAILABLE

Please call 07718 882400



PUNS
FOR
FUN



R. J. Bray & Son

*Independent Family
Funeral Directors*

Lywydhyon Ynkleudhyas Teylu Anserghek

**Funerals completely furnished
Day and Night Service to all areas
Chapel of Rest
Nationwide Contacts
Personal Attention
Funeral Plans available**

Member of the National Association of Funeral Directors

Bridge End, Wadebridge

Telephone: 01208 812626

Fax: 01208 814996 Email: david@rjbray.co.uk

www.rjbray.co.uk



The Friends of Luxulyan Valley

Why not join us and support the conservation of this World Heritage and Wildlife area on your doorstep?

Membership details are on our website

www.luxulyanvalley.co.uk

or contact Robin Stephenson (Chair)
on 01726 852109

or Claire Eich (Membership Secretary)
on 01726 850781

Guests and new members are always welcome at our events - see "Dates for your Diary"

M.M.B. PLANT HIRE

Mark: 07816 852022

Brian: 07863 288963

Home 01726 852197

Ground works - Landscaping

13 tonne swing shovel

5 tonne excavator

1.5 tonne mini digger



OUR ROOTS ARE POTATOES BUT OUR FARM SHOP IS ALWAYS GROWING!

We are proud supporters of our farming friends and local quality suppliers.

We stock: Fresh bread and cakes. Meat. Dairy, non dairy, cheese, creams and eggs. Fruit, vegetables and salad, including a huge potato line up. Frozen pasties, sausage rolls and ice cream. Food cupboard essentials. Hot and cold drinks.

Preserves and treats. Logs, coal and kindling.

Drinks and alcohol - Wines, ciders, ales - Our vodka and gin too!

Ask about our loyalty scheme.

www.colwithfarmshop.co.uk

Thank you for your ongoing support to us

Open 7 days a week

Colwith Farm Shop - On the Lanlivery Junction,
Pelyn Cross, Crewell Moor, Lanlivery PL22 0JG

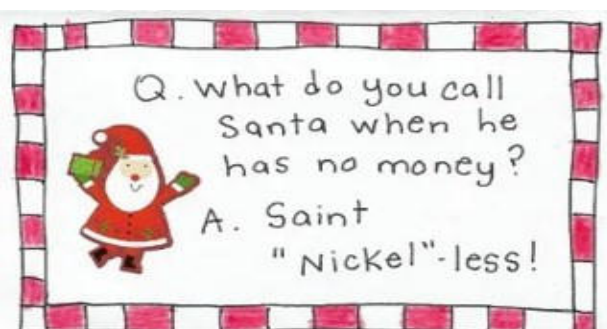
E: info@colwithfarmshop.co.uk

T: 07500 872 639



**Sammy J's
soft play**

07921549462
find us on
Facebook and
Instagram



ENVIRONMENT COLUMN

Luxulyan Environment Green Glebe Space LEGGS

Today (11 November) we had a beautiful, calm, dry and mild day for our volunteer morning. We have had a professional in to do some strimming in Little Meadow, so the morning was spent raking the grass up; it was a little late to do this, but the wet weather has been against us this year. We then spread as much yellow rattle seed around as we could with plans to spread some wildflower seeds over the next week. We hope that you will be able to see the results of our hard work next summer! After a planned stop for two minutes silence for Armistice Day, we enjoyed a coffee and some fruit cake kindly made by Ros.

There are still plenty of tasks to be done; we are constantly trying to keep the pathways open so that it makes it easier to walk around but our main task is to increase the biodiversity of the area. We want to see more wildflowers and a wider range of animals visiting and living on the land. We have captured lots of deer visiting both during the day and the night on the wildlife camera.



You may have noticed that the new pedestrian gate has been put up which means that it is easier for everyone to go in and visit – it is open at all times. There are a couple of benches in the shelter to sit and rest on, a couple of picnic tables available for use and we have a bench for the top of Drying Yard field on order.

Our next volunteer morning will take place on Saturday 9 December 10 am to 1 pm, but you are invited to have a wander around to see the winter wildlife (robins galore today!) have a catch up with our plans for the future, and we'll supply the mulled wine and mince pies! (Donations towards the rent for next year gratefully received!)

We will also have a volunteer morning on Saturday 13 January; for further information about the site please contact Shelley Porter 07761 798220.

* * * * *

FROM CHURCH



From the Rector

Continuing the theme of the life of the parish church in the rural idyl, so far, I've tried to show that life in rural paradise is sometimes challenging and difficult. I've also tried to outline some of the struggles facing the local parish church in that rural context. Last time I suggested that by diversifying the use of our buildings to include truly community events, there might be a bright future for the parish church.

But the problem of remaining relevant within our communities is only part of the story. How does the rural church continue to grow and develop on the inside; how we grow, develop, and structure the life of our congregations and leaders is the subject this edition.

Our diocese has embarked on an adventurous and innovative project called 'On the Way'. At the heart of this movement is the belief that everyone has a part to play and a role to perform in the local church! This is nothing new of course, St Paul told his congregation in Ephesus something similar almost 2,000 years ago!

The idea that everyone has a part to play in the local church is a rich seam to explore, and there will be lots of different ways to look at it. But I offer the following ideas in the hope that they might help us to imagine what the church might look like going forward, and how you can be part of that future.

The Laity: equipping the ministry of lay people.

The Christian faith lived out by all God's people is pivotal to 'successful' mission and ministry in rural communities. The job of your vicar is to identify and encourage congregations to do this, irrespective of the size of the congregation! The continued development and equipping of lay ministry amid the challenges of dispersed populations, extensive ministry areas, multiple church buildings, and social changes is an exciting prospect, but one that requires the essential involvement of the whole congregation.

The Rural Context: developing disciples.

Developing and equipping our congregations is critical to the future flourishing of rural parish ministry and will only happen as we are willing to commit ourselves to share the Gospel. The rural parish church is uniquely placed to achieve this as it embeds itself within the life of the community.

The challenge will be to explore, discern, and develop an appropriate way of doing this – today's church for today's generation. Perhaps the time has come to ask if the traditional, rural model of worship and ministry is still achieving what it did in the past, and if not, then to reimagine a model that will.

(Continued on page 22)

FROM CHURCH

(Continued from page 21)

The Rural Calendar: Liturgy & Life events

Even though the traditional methods of worship might be stretched in some cases, generally the rural church has historically been deeply integrated into rural community life, where worship is reflected as much in the changing seasons and the rhythms of community life as in the Christian year. Arguably, life in rural communities is different from what it once was, but there is much to still commend the use of the Church's life events and its rich liturgical history to promote and embed the life of the church into the life of the community.

This might include the celebration of the great agricultural feasts of Rogationtide, Lammastide, Harvest Festivals, Christmas, and Easter, whilst also ensuring that baptisms, weddings, and funerals are the best possible experiences for our communities they can be.

To be sure, at their best, rural congregations are embedded in the life of their communities, and this incarnational relationship between church and its community reinforces the sense that the church is an integral part of that community's life rather than simply being a detached institution.

Next time I'll conclude this mini-series by exploring something of the ways in which the rural parish church can impact on the life of its community, and how it can be an influence and positive force for change and renewal.

Last month I likened the natural rhythms of life to those of the ebb and flow of the tide. Little did I know then how significant that analogy would become as storm Cairn made its presence felt along the south coast! Once again, many of our residents in Lerryn and Lostwithiel experienced the damaging effect of a rising 'Spring Tide'.



Dear friends,

For those of you who know me the following may come as a surprise. Last weekend I watched the Barbie movie for a second time. Now, before I say anything about it, I'd like to point out that what I am about to write may contain spoilers. So, if you're intending to watch the Barbie movie and would like to hold on to the suspense, this article might not be for you.

As you may have heard, it is surprisingly deep. Where you might be expecting to watch a fluffy, pink film designed for 8-year-old girls, you'll actually find some pretty sophisticated themes; feminism and patriarchy are the main ones, and the debate as to whether Barbie has managed to open the doors for little girls everywhere - to imagine themselves as more than just a wife and mother, or whether, instead, Barbie has simply added to the unrealistic expectations women place on themselves. In other words, although now, women can engage in any career, they are still expected to look nice and care for their family.

As a result of that debate a teenager called Sasha levels a harsh accusation at Barbie and calls her a fascist. To which Barbie replies "I can't believe she called me a fascist; I don't control the railways," which you definitely have to be over the age of eight to find funny.

While feminism is one of the central themes, there is a lot more going on in the film. And the one that struck me as I watched it a second time was how hard it is to be human. The film centres on a mother who works at Mattel (where Barbie is made) who is beginning to face her own mortality and the sadness she feels at watching her daughter, Sasha, grow up. She begins to draw her own concept pictures of Barbie and one is entitled "Impending thoughts of death Barbie" complete with cellulite. The idealistic and hopeful child who had played with Barbies has now become a tired and philosophical adult.

Without walking you through the entire script, by the end of the film we are forced to face how uncomfortable it is to be human. To be human is to be in a constant state of change. Nothing stays as it is, and however much we like to ignore it, we are all growing older day by day and a little closer to the end of our time on earth.

Sticking with the theme of water, a confluence is described as, 'the place where two or more flowing bodies of water join to form a single channel'. This month in the liturgical calendar we mark the start of Advent, although that doesn't even begin to capture everything that happens in the busy month of December! The season of Advent leading into the feast of Christmas could be described as a confluence; the place where two or more themes converge.

Advent Sunday will have marked the start of our journey through this most mysterious of seasons, which for many Christians is a precious gift as we pause to reflect on the weightier aspects of what it means to be human, and as we prepare for the mystery of the incarnation – when we consider that the God of the universe stoops down to become one of us! In our modern world, Advent is now often observed alongside the festivities of our communities at this time of the year, so our churches may also be decorated for the approaching festive season. As Christians we may not be able to find time or space to pause or catch a breath as we get carried along from one event to another, and despite the promises we made to ourselves last Advent, we will no doubt be as exhausted by the end of this Advent as we were last year!

The other great theme of this season of course is Christmas - the feast of the Mass of Christ, when Christians celebrate the coming of Jesus Christ into the world as a baby to bring the good news of God's love to a dark world. Christians the world over celebrate this ancient message every Christmas time and it never seems to grow old or become tired. Despite the rapid progress, advancements, and developments in the modern era, the message that Hope has come to banish despair, that a Light has come to dispel the darkness, and that Love has come to conquer hate and guide us home is one that is still, strangely compelling.

Wishing you, and all those whom you love, a very blessed Christmas.

Revd. Paul.

On that cheery note, I'd like to make a tenuous sounding link to Jesus and the message of Christmas! The wonder of Christmas is that Jesus is God made human. He walked about on earth and lived the life every human lives - he was a child, he would have engaged in family and faith traditions, he celebrated, and he lost loved ones and he mourned. He suffered injury, and I think it is fair to assume he suffered illness. We don't just have a God who created the world and left us to it. We have a God who truly understands the pain and challenge of being human.

I am very blessed to have grandparents still alive, but they are now very elderly. If I am honest, I find the celebrations of Christmas a bit of a challenge. Where there used to be days of games set up by my grandad and more food than you can imagine, now there aren't any young children in the family it is all a bit more subdued. Like many of us at this time of the year I have the odd stab of nostalgia. I miss those who made Christmas of yester-year special. The people who I had some traditions with have moved on and I have different responsibilities. But in all the changes and the losses, God is still here with me.

(Continued on page 25)

FROM CHAPEL



You may have seen an amazing picture of the world at night viewed from space. The world is lit up with the brilliance of light emitted from the great cities and conurbations of the world. Whatever we may think of the imbalance in the access to and use of energy throughout the world, the picture shows the world shining like a giant Christmas decoration hanging in the vast Christmas tree of space.

There is a story of the young Robert Louis Stevenson, who when staying in Edinburgh was fascinated by the lamp lighter climbing ladders with flaming torches to light the streetlamps. He said "Look at that man! He's punching holes in the darkness."

So, as we enter the darkest months of the year, here's a traditional Chinese proverb: "It is better to light a candle than curse the darkness." This certainly could be said of the women featured in the film *Suffragette*, as they challenged the injustices suffered by women a century ago. But when any candle is lit, there is always the risk that our fingers will get burnt. There was a cost to the suffragettes in ridicule, persecution, imprisonment and even death for some. Yet countless millions now benefit from their legacy of risky and sacrificial lighting of the candle to punch holes in the darkness of prejudice and injustice. Although we must admit, tragically there is still much work to be done, both here and in other countries.

Light and darkness, like oil and water, are mutually exclusive. Where even the tiniest fragment of a spark of light exists, darkness is dispelled. This is what John means when he says the light shines in the darkness but the darkness has not overcome it (John 1:5). The light he is talking about is Jesus, whose risky sacrificial love seeks to be the illuminating life-enhancing power which punches holes in the darkness of all that diminishes human life. So, at this Christmas, and into the New Year of 2024, rather than complaining about that which is wrong in life, try to overcome the darkness by shining a light, so the world around us will be illuminated with love and peace, life, and hope.

Christmas and New Year Blessings

Revd Iris Bray
Gunwen Methodist Church

NEWS FROM GUNWEN

During October and November, we have, at Gunwen have shared in fellowship with people from Bugle and Roche. We have welcomed the Luxulyan Old Cornwall and children from local primary school to share in Crying the Neck, a traditional way to mark the Harvest.

Our Harvest festival was led by Mrs Esther Benney and we once again had an evening of thanksgiving and sharing with a harvest supper and auction of produce, although most of the tinned and packet foods were donated to the local food bank.

Looking forward to Christmas we have a coffee morning that will be held in the community room on Thursday 7th December 10-11.30am. Our annual carol service will be held on Sunday 17th December at 6pm

Old Christmas Day Saturday 6th January 2.30pm followed by tea all are welcome.

Chapel Services

Regular Sunday services will be held 10th December at 11am Mr T Warren HC

Special services during December around the area:

3rd December Bugle carol service with Bugle Silver Band at 6pm

Carol service at Gunwen 17th December 6pm followed by mince pies

Christmas Eve: Stenalees 10.30 Rev Iris Bray

Christmas Day: 8.30 am Carclaze and 10.30 St Dennis Rev Iris Bray

New Years Eve: Nanpeen 11am Rev Iris Bray

7th and 14th January fellowship 11am, 21st Mr D Michael, 28th Roche 10.30am

A warm welcome awaits anyone who would like to join us

If you would like more information about any of the planned services, please phone Ivan Phillips on 07812 454665.

With best wishes from all at Gunwen Chapel

Maria Truscott-Robins

Lanlivery Church News and Services

Lanlivery Services

Worship will be available online via the Benefice of the Lostwithiel Parishes Facebook page and on YouTube. Please check pew notes, social media and the notice boards.

December 2023

An Advent Course will be held at the Rectory in Lostwithiel at 3 p.m. on Tuesday 5th, 12th and 19th of December.

3rd, Advent Sunday

9.30 Morning Prayer

10th, Advent 2

9.30 Eucharist

17th, Advent 3

No morning service

6.00 Nine Lessons and Carols

24th, Christmas Eve

No morning service

4.00 Crib and Christingle

10.00 Midnight Mass

25th, Christmas Day

9.30 Worship at the Crib

31st,

10.30 Benefice Service at St. Winnow. No service at Lanlivery

January 2024

7th, Baptism of Christ

9.30 Morning Prayer

14th,

9.30 Eucharist

21st, Christian Unity

9.30 Morning Prayer

28th, Holocaust Memorial Sunday

9.30 Eucharist

CONTACT DETAILS FOR LANLIVERY CHURCH

www.lanliverychurch.org.uk
lanlivery@gmail.com

Rector: The Revd Paul Beynon,
 The Rectory
 Springfield Close,
 Lostwithiel
 01208 623577
p-beynon@sky.com

Associate Priest: Revd Sheila Bawden

Churchwardens

Tim Turner: 01208 872165
 Ellen McConnell: 01208 872981
ellen.mcconnell@hotmail.co.uk

Church Office:

01208 872232
church_centre@yahoo.co.uk

Years' Mind

remembering the anniversaries:

Dec

Rose Melanie Scorse
 Margaret Sophia Williams
 Walter John Wellington
 Valerie Christobell Lyons
 Horatio Allen Griffiths
 Ray Davis
 Jean Husband
 Bethan Kathryn Charles

Jan

Elsie Saggs
 Ian Crawford
 Patricia Griffiths
 Mary Beatrice Martin
 Gordon Faddy
 Elisabeth Jean Thomas
 Moyra Jean Serls
 John Maurice Higham Linfoot



LUXULYAN CHURCH NEWS

CHURCH ACTIVITIES



SOUP & SWEET IN LUXULYAN CHURCH



Soup & Sweet is provided on the first Sunday of each month at mid-day. There is no need to attend the church service preceding this. The next dates are 3rd December & 7th January.

PRAYER WALKS

Luxulyan church organises a prayer walk in the parish once a month.

If you would like to join us or have a particular person or place that you would like us to pray about please contact Shelley on:

famporter58@gmail.com
or 07761 798220

ST AUSTELL FOOD BANK – helping local people in crisis

We are happy to receive donations for the food bank at any time. Don't forget to include toiletries as well as staples such as tinned tomatoes, tinned fruit, soups, and treats (chocolates etc). Toilet rolls also very welcome!

These can be left in the marked box just inside the church.



LUXULYAN PARISH CHURCH

MISTLETOE MARKET

SATURDAY 2nd DECEMBER

10 am – 1 pm

Cake Stall, Craft Stalls

Refreshments,

The Legendary Christmas Hamper,

Raffle, Tombola, Competitions,

Entertainment

Free entry

Donations to food bank at the door welcome



Luxulyan Church Services

Below is a draft. Note that some of our services may change. Please check notice boards, the website and social media for the latest update!

Sunday 3rd December

11 am Sung Eucharist

Rev Jules Williams

Sunday 10th December

11 am Sung Eucharist

Rev Jake Loewendahl

Wednesday 13th December

2 pm School Carol Service

Friday 15th December

1.45 pm Christingle

Rev Jules Williams

Sunday 17th December

11 am Christmas Family Service

Rev Jules Williams

Sunday 24th December

7 pm Nine Lessons and Carols

Rev Jules Williams

Monday 25th December

10 am Sung Eucharist

Rev Jules Williams

Sunday 31st December

9.30 am Combined at St Blazey

Rev Jules Williams

Sunday 7th January

11 am Sung Eucharist

Rev Jules Williams

Sunday 14th January

11 am Sung Eucharist

Rev Hugh Symes-Thompson

Sunday 21st January

11 am Sung Eucharist

Rev Jules Williams

Sunday 28th January

11 am Parish Praise

Local Worship Leaders

CONTACT DETAILS FOR LUXULYAN CHURCH

Website: www.achurchnearyou.com/church/2490/

Priest:

Rev. Jules Williams

01726 76282

revjules@btinternet.com

(Day off normally Friday)

Churchwardens:

Robin Burley

01208 831145

rabkol@aol.com

Jim Cleare

01726 850553

Jim.cleare@btinternet.com

(Continued from page 23)

Jesus is for life, not just for Christmas. Indeed, Jesus is for life and not just a children's story. He has made the creator of the universe accessible to us by the Holy Spirit. And that means that in the good times and in the downright awful times He is longing to draw near to us. More than that, he gets it. He understands the tension we feel each day between looking back with sadness or joy and looking forward with expectation or fear.

As we go into this next year, I'd like to encourage us all to seek the God who sent His own Son into the world to save people just like us.

"Therefore, since we have a great high priest who has ascended into heaven, Jesus the Son of God, let us hold firmly to the faith we profess. ¹⁵For we do not have a high priest who is unable to empathize with our weaknesses, but we have one who has been tempted in every way, just as we are—yet he did not sin. ¹⁶Let us then approach God's throne of grace with confidence, so that we may receive mercy and find grace to help us in our time of need."

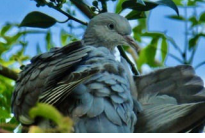
Hebrews 4.14-16 NIV

Jules x

COUNTRY DIARY

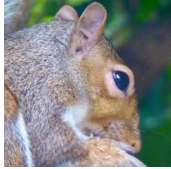
14th SEPTEMBER 2023

A warm day. Late afternoon I become aware of a large flock of swallows gathering over the house and garden. There is much excited chattering as they circle and flutter, all the while gradually moving south, drawn by a timeless and powerful instinct. I stand in awe to watch and within ten minutes the sky becomes empty and silent. I have been witness to the miracle of migration.



16th SEPTEMBER

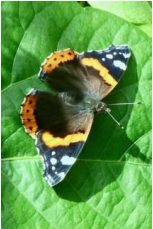
In the cemetery many wood pigeons are feasting on the rich harvest of fallen beech nuts and a grey squirrel crosses my path eager for a share of



the bounty. A yaffle calls loudly from the treetops and a robin sings sweetly nearby.

20th SEPTEMBER

Rain and wind. A male and female bullfinch drop by to feed. I realise that I have not seen any juveniles this season. Whilst photographing a discarded moth chrysalis I encounter a frog who quickly hops away into the long, wet herbage.



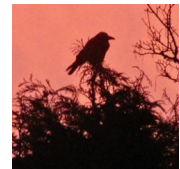
25th SEPTEMBER

A red admiral sunbathes in a sheltered spot while a jay screeches suddenly from his perch up in the horse chestnut. I muse on the fact that such a beautiful bird has such a harsh, raucous voice.



27th SEPTEMBER

The haunting cries of the ravens carry on the rising wind as storm Agnes approaches.



1st OCTOBER

Warm and humid today. I note that, just as dusk is encroaching, the crows are making their usual agitated contact calls as they prepare to roost in the pines on the hillside. Blackbirds behave in a similar way before

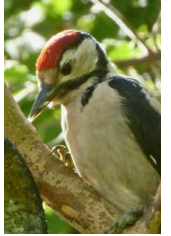
silence falls and darkness embraces the landscape. In the twilight I watch a pipistrelle bat flitting over the house and garage.

4th OCTOBER

Mild and calm. Bumblebees, other bees, and hoverflies are busy gleaning nectar from the remaining ivy flowers. A chiffchaff calls strongly above the stream area. This is the latest in the year that I have heard it. September was the warmest on record along with 2006. The bat appears again at 7.19pm.

9th OCTOBER

A robin sings while a great spotted woodpecker taps vigorously on an old wooden clothes post. They are each, in their own way, defining and declaring their territories. At 3.40pm I observe approximately forty ladybirds scuttling up and down the sun warmed walls and windows of the house. The temperature is currently 21°C.



10th OCTOBER

Dry and warm. All the elderberries have gone but the hawthorns glow crimson with ripe haws or 'eglets'. I observe nine goldfinches visiting the feeders.

13th OCTOBER

In Lanivet I watch a jackdaw eating acorns on the wet grass beneath a spreading oak tree.

25th OCTOBER

As I stand beneath the poplars a leaf flutters from a branch like a startled bird. I hear a fieldfare in Willow Wood.

26th OCTOBER

The afternoon brings angry skies and vivid rainbows. At dusk I notice a fountain of dancing midges over the ivy.

31st OCTOBER

The house sparrows have now returned from their late summer foraging out in the wider countryside.

3rd NOVEMBER

Storm Ciaran has left us, and the day is bright but remains breezy. I see a female siskin on the feeder and ten collared doves in the leafless poplars. A pair of bullfinches share a meal on the seed tray but a great tit who attempts to join them is quickly repulsed by the male! At 5.00pm a hedgehog is busy feeding from its bowl.

4th NOVEMBER

Shortly after 9.00am the water rail makes a welcome return to pond six and the



1st Call Septic Tanks

Waste Management Services
Steve Tonkin



Lanlivery and Luxulyan
Limited Special Offer:
Tank emptying from £180

Tel: 07816 597 246

www.1stcallseptic tanks.co.uk

Septic Tank and Cesspit Emptying
Covering the St Austell and Bodmin area
We ensure a fast, friendly and trusted service
Our drivers are highly experienced
And we are also fully licensed to give you complete peace of mind.

NO VAT on Domestic/Household services.

For further information or to talk to us about your septic tank or cesspit requirements with no obligation, please phone 07816 597246

COUNTRY DIARY

surrounding area. I have not seen him since March and wonder where he spent the summer.



6th NOVEMBER

A lone starling appears on the suet coconut. It is probably the same one that spent last winter here.

25th DECEMBER 1988

At nightfall, as I drive through Bodelva and Luxulyan, the wind is stirring. I continue my journey past cottages, their windows twinkling with festive lights, then along dark roads where skeletal branches define the midwinter hedgerows. Soon I will be home, seated with my family around the Christmas tea table by the fire burning brightly in the hearth.

2nd JANUARY 1983

The new year brings an unexpected visitor to the garden. A chiffchaff flits amongst the bare sycamore boughs before discovering a greenfly infestation on a potted chrysanthemum that I had placed outside earlier. I film it as it feasts on this festive meal. It would seem that, along with its fellow warbler, a recently sighted blackcap, this chiffchaff, instead of migrating to warmer climes, has chosen to overwinter here.

Kathryn Hill

EMAIL FROM OXFORD



On our journey through this life there are good times, bad times and a whole host of in between times. The last couple of months have seen the loss of a few from my circle of friends, there has also been a fair whack of bad events in the global arena which have made us all wonder 'what on earth is going on!', and possibly, 'is there anything we can do about it?' Equally we have things like the Earthshot Prize which highlight all the incredible ingenuity and positivity that abounds in the world. Things that are actually helping to make a positive difference for everyone.

My mother-in-law calls looking at the online news feed 'doom scrolling' which I find to be an apt explanation, and one for which I try to limit, for my own peace of mind. If only the positive news was made the main event instead of the doom and gloom, how different would our daily outlook be? To try to turn the tide I've found an online news and magazine site which reports on the positive things happening in the world (www.positive.news), it's got to be worth a shot, right? and with heading into the tail end of the year where positive messages are the 'thing' for going forward. Perhaps we can find some real-life positivity to help us start the new year with.

A message from the universe that I have been picking up a fair amount recently, is to 'live in the present'. None of us know what is around the corner, we can plan for the future, but we need to live for today. This isn't new, it's something I have known for a long time, but I get so engulfed in the mundane-ness of day-to-day life and the speed at which the days and months pass by, that even with my best intentions, it stops happening and I enter 'auto-pilot' mode.

In an effort to take charge of my days, I've made a concerted effort to start tackling the piles of random clutter

and other paperwork type jobs that I have left for some other day. It's still early days, but even a small change makes such a difference to my feeling in control of my life again, instead of my lifestyle controlling me. As Robert Louis Stevenson once said, 'Don't judge each day by the harvest, but by the seeds that you plant', and I am doing my utmost to plant some seeds of change.

On the subject of seeds (of the plant kind), I have discovered that I have amassed rather a large collection; I like to buy a packet or two, use some, and leave the rest for later sowings. This is fine however I now have a LOT of half packets to do something with. OK so this time of year is not the best time to do anything particularly practical with them, so instead I have taken to hatching a plot for a few months' time. It involves a greenhouse, compost and trays of happy seedlings which don't get munched by the army of slugs I seem to be cultivating. The preparation for this hopefully productive enterprise which I plan to start early in the new year is underway. Firstly, is the application of nematodes to interrupt the slug population, this has started, but I need to get another lot on. Secondly is to source a local farm or stable that I can collect some of their finest manure to add to my soil to mulch down over the winter. The next stage is figuring out which seeds to plant when and where. I feel the draw of a large pad of paper, some marker pens and possibly some blue tack to stick it up to the wall, all I need then is some sticky-backed plastic, and a cardboard box to make it a real Blue Peter project. My earworm of the moment (song that keeps playing in my head) is the classic Monty Python one by Eric Idle 'Always look on the bright side of life', it's great for bringing perspective but with a smile and a whistle. I'll let you look up the lyrics, hopefully it'll make you smile and chuckle as it did me.

Wishing you all a bright and merry Christmas season. Until next year.

Katy x

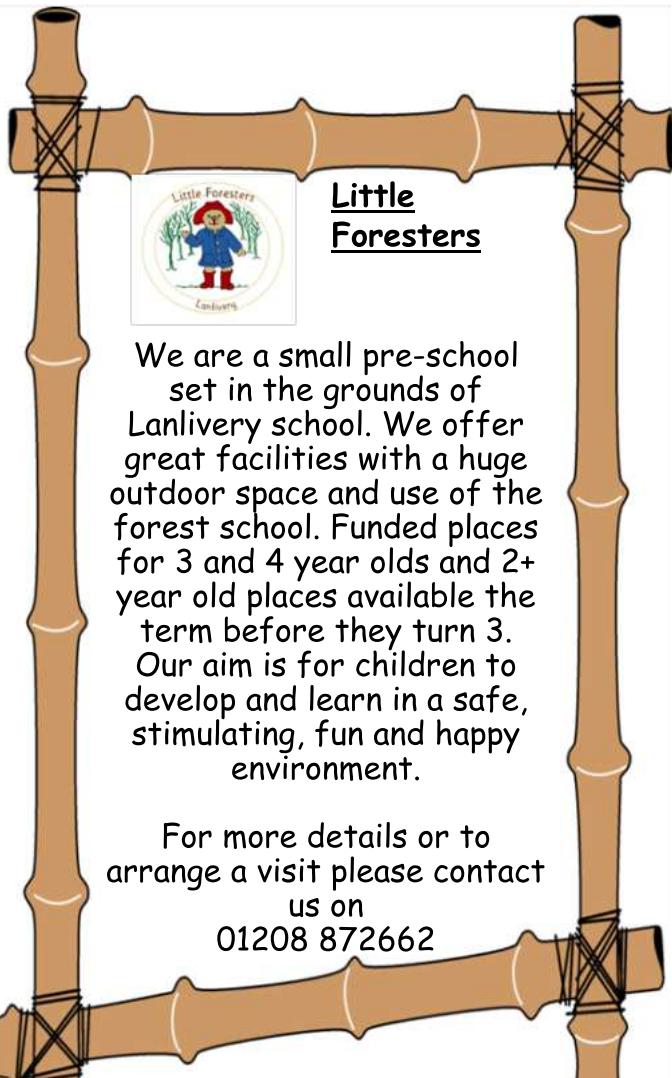
Lanlivery Parish Church



"Carols in the Crown"
Friday 22nd
December
at
8.30 p.m.



Enjoy singing all the favourite carols
 and stay to enjoy the company and
 hospitality.



Little Foresters

We are a small pre-school set in the grounds of Lanlivery school. We offer great facilities with a huge outdoor space and use of the forest school. Funded places for 3 and 4 year olds and 2+ year old places available the term before they turn 3. Our aim is for children to develop and learn in a safe, stimulating, fun and happy environment.

For more details or to arrange a visit please contact us on
01208 872662

LOSTWITHIEL COMPLEMENTARY HEALTH CLINIC

Home to the Children's clinic for Cornwall
Registered Charity offering the following for all ages

OPEN by appointment only

Please ring the numbers against therapist

Cranial Osteopathy Philip Hartnoll, DO FSCCO
Kate Hands, DO. And also for
Homoeopathy, please leave a message on the clinic
number:

01208 872867 and we will return to you asap

Nutritional, Iridology & Reflexology

Claire Hicks D.Th.D.(dist) D.N.Med. (Dist) D.Iridol.

MAR.BANT.CNHC

Contact 07866 012495. www.claire-hicks.co.uk

Acupuncture: Richard Lamb Bsc LicAc, MBAC

Contact 07769253011 [website Richard-Lamb.co.uk](http://website.Richard-Lamb.co.uk)

Psychotherapy: Matt Wardley MEd DPsych

Contact 07813641091 www.drmatthewardley.co.uk



Our purpose built, OFSTED registered,
Pre-school setting within
Luxulyan Village Hall, offers professional
quality childcare in Early Years Education
for children aged 2-4 years old.

We provide a fun, happy, and safe
environment with fantastic facilities including,
an amazing undercover outside play area.

Term time only sessions with
Grant Funded sessions available

For more information please contact
Steph Apostolou: luxulyanpreschool@gmail.com

ALL ABOARD
to LUXULYAN PRE-SCHOOL

Looking for a **Local Handyman?**

'Bulford of Bridges'
Handyman Services

For odd jobs and big jobs -
Steve's the handy guy to know!

Let's discuss your needs:

01726 858723

(10am - 8pm, any day of the week)

stevebulford@gmail.com



Creusa Kennels is a modern kennels and cattery situated just off the A30 near Luxulyan between Bodmin and St Austell.

We offer a high quality pet boarding facility providing loving, safe and stimulating surroundings for pets whilst away from their home.

Day Boarding (a few hours to the whole day)

Full Holiday Boarding (for local residents and tourists with pets) as well as a range of other kennel services.

www.creusakennels.co.uk

tel 07307 686388

Hillside, Seven Stars, Bugle, Cornwall PL26 8RT

william.creusakennels@gmail.com

LUXULYAN COMMUNITY CINEMA

At Luxulyan Village Hall

OUR NEXT 2 FILMS

Thursday 18th January

A HAUNTING IN VENICE

In post-World War Venice, Poirot, now retired and Living in his own exile, reluctantly attends a séance. But when one of the guests is murdered, it is up to the former detective to once again uncover the villain.

Thursday 15th February

'ALLELUJAH'

When the geriatric ward in a small Yorkshire hospital is threatened with closure, the hospital decides to fight back by galvanising the local community.

Doors Open 6.30pm Film 7.30pm entrance £5.00 Licensed Bar

PLEASE NOTE THERE IS NO FILM IN DECEMBER

Williams Garden Services

williamsgardenservicescornwall.co.uk

Landscape Gardening & Construction

Gates Fencing Decked Areas
Patios - New, Repaired, Repointed
Paths Driveways Gravel
Shed Construction and Repair
Bespoke Garden Features
Livestock Enclosures - Raised Beds

Rejuvenate Your Outdoor Space

Whole Garden Clearance
Pressure Washing, Mulch Borders
Pond Maintenance
Removal of Hard Core, Green Waste,
Wood & General Rubbish

07907 734106 or 01208 832148

'We do the work, you enjoy the results'



The King's Arms

Bridges, Luxulyan. PL30 5EF

01726 850202

Your local....in tune with the community.

Free Wi-Fi

Good food is available between
12—2 and 6—8.30 pm Tue—Sun.

*Wayne and Sam look forward to welcoming
customers old and new*



Kerry Hemmings

Petsitter
Doggy Day Carer
Dogwalker
Groomer

Kez Pet Care

Bokiddick Farm
Bodmin
PL30 5HP

07931 868968

kezandco@hotmail.com

@kezpetcare



Porter Electronics

Computer Repair and Custom Builds

We offer a wide range of computer services, including:

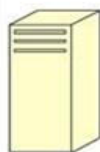


- Wireless network installation from home to multiple site wide system for business
- Computer installation, software setup and instruction in the basic use of the system
- Custom designed and built computers. From a single home computer to multiple workstations and server package for business.

Bespoke or off the shelf.

Whether its a one off job up to a flexible maintenance contract package.

Just contact us by phone or email.



Phone: 01726 851120

Sound and Lighting Hire



We can supply equipment for any use, the limit is your imagination.

Here are a few of the projects we have been involved in

- Theatre
- Corporate Events
- University End of Year Ball
- Sound Reinforcement for Bands and Singers
- PA Installation, both temporary and permanent, indoor and out.

From a week long show to one night only, A tailor made package to suit your requirements and budget.



If required a fully trained, professional and courteous engineer can also be supplied with the equipment to operate and look after it during your show, so your show can look and sound the best it can.

So for your next event just get in contact!

Email: Alan@AWPComputer.co.uk



PRIDEAUX BUILD

Property Development & Building Contractor

New Build – Extensions – Conversions – Commercial Premises – Maintenance - Insurance

Call or Email:

07895 010958 / 07867 514393

prideauxbuild@btinternet.com

Dates for your Diary

DECEMBER 2023

Wednesdays	Luxulyan Short Mat Bowls	2.00 – 4.00pm 7.00 - 9.00pm	Luxulyan Village Hall
Fridays	Luxulyan Short Mat Bowls	7.00 - 9.00pm	Luxulyan Village Hall
Friday 1 st	Christmas Bazaar	1.00pm – 4.00pm	Lanlivery Church
Saturday 2 nd	Mistletoe Market	10.00am – 1.00pm	Luxulyan Church
Saturday 2 nd	Coffee Morning	10.00am	Luxulyan Memorial Institute
Sunday 3 rd	Soup and Sweet	12.00pm	Luxulyan Church
Wednesday 6 th	Luxulyan Over 50s	12.00pm	The King's Arms
Wednesday 6 th	FOLV – Talk by Katie Bellman	7.30pm	Luxulyan Village Hall
Thursday 7 th	Coffee Morning	10.00am – 11.30am	Gunwen Chapel
Saturday 9 th	LEGGS Volunteer Day	10.00am – 1.00pm	Glebe Land
Tuesday 12 th	Restormel Concert Band	7.30 pm	Lanlivery Church
Wednesday 13 th	WI	7.00pm	Luxulyan Village Hall
Thursday 14 th	Lanlivery Over 60s	12.00pm	The Crown Inn
Wednesday 20 th	Luxulyan Over 50s	12.00 Noon	The King's Arms
Friday 22 nd	Carols in the Crown	8.30 pm	The Crown Inn
FOR CHRISTMAS SERVICES PLEASE SEE RELEVANT CHURCH/CHAPEL PAGES FOR DETAILS			

JANUARY 2024

Wednesdays	Luxulyan Short Mat Bowls	2.00 – 4.00pm 7.00 - 9.00pm	Luxulyan Village Hall
Fridays	Luxulyan Short Mat Bowls	7.00 - 9.00pm	Luxulyan Village Hall
Wednesday 3 rd	Luxulyan Over 50s	12.00 Noon	The King's Arms
Saturday 6 th	Coffee Morning	10.00 am	Luxulyan Memorial Institute
Sunday 7 th	Soup & Sweet	12.00pm	Luxulyan Church
Wednesday 10 th	COPY DEADLINE FOR FEBRUARY-MARCH 2024 GRANITE TOWERS		
Wednesday 10 th	WI	7.00pm	Luxulyan Village Hall
Thursday 11 th	Lanlivery Over 60s	12.00pm	The Crown Inn
Saturday 13 th	LEGGS Volunteer Day	10.00am – 1.00pm	Glebe Land
Wednesday 17 th	Luxulyan Over 50s	12.00 Noon	The King's Arms
Wednesday 17 th	FOLV – Introduction to Cornish Crosses	7.30pm	Luxulyan Village Hall
Thursday 18 th	Luxulyan Community Cinema	Doors Open 6.30pm Film Starts 7.30pm	Luxulyan Village Hall
Thursday 25 th	Charity Coffee Morning	11.00am	The King's Arms

